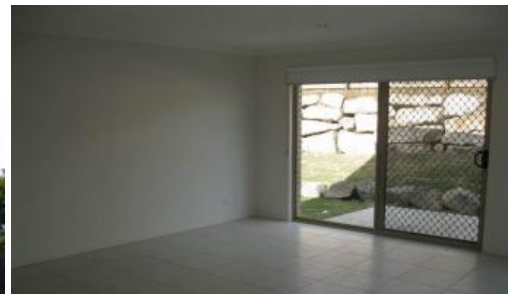
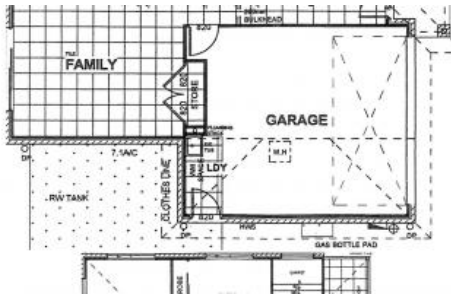


Sold



## 46 Wyndham Cct, Holmview



### HOME ON LARGE CORNER BLOCK ! OWNER WILL CONSIDER YOUR OFFER

This 2 storey home overlooking the Reserve in Holmview is located on a corner block. Between Brisbane and the Gold Coast and within minutes to shopping centres, schools, parks, public transport and more.

#### Features:

- 4 Bedrooms - master with walk-in-robe, Ensuite and private balcony
- 3 Bedrooms have built-in robes and ceiling fans
- Modern open planned living area with kitchen/dining
- Kitchen has stainless steel appliances
- Reverse cycle Air conditioning
- Double garage with off street parking
- Good sized yard

Live in or invest in this one. Good walking tracks and positioned in a good circuit.

Call Simon to inspect M: 0418 521 341

The above information provided has been furnished to us by the vendor/s. We have not verified whether or not that information is accurate and do not have any belief in one way or the other in its accuracy. We do not accept any responsibility to any person for its accuracy and do no more than pass it on. All interested parties should make and rely upon their own inquiries in order to determine whether or not this information is in fact accurate.

🛏 4 🏠 3 🚗 2 📏 431 m2

<b>Price</b>	SOLD
<b>Property Type</b>	Residential
<b>Property ID</b>	1351
<b>Land Area</b>	431 m2

#### Agent Details

Simon Durante - 0418 521 341

#### Office Details

Oxenford  
Shop 2 / 161 Old Pacific Highway  
Oxenford QLD 4210 Australia  
07 5529 9777

